

New: modular single flute drill Type 01T

→ now with innovative indexable insert

Diameter: 12.00 – 17.99 mm

Advantages of the single flute drill Type 01T at a glance:

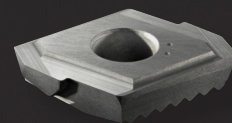
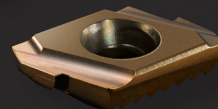
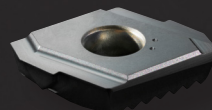
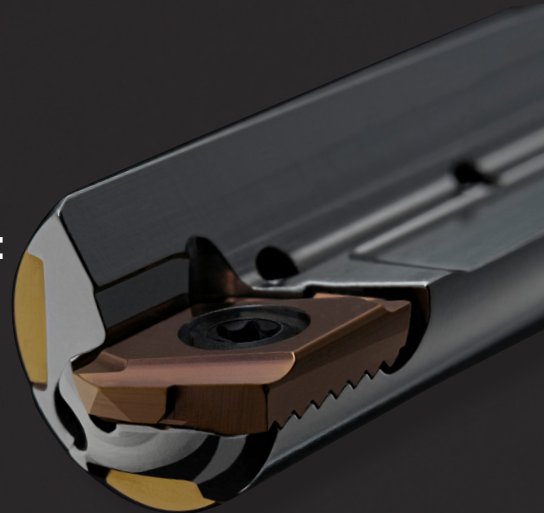
- Less disposition and storage
- Spare parts available ex stock
- Improved efficiency and sustainability
- Improved price-performance ratio due to double the tool life thanks to double the number of cutting edges compared to previous inserts

Individual consultation:

Our experienced application engineers will support you in finding the optimum solution for your processes.

Contact us via our Technical Hotline: +49 7123 3808-200.

Enquire now and experience the advantages of the new Type 01T drills with indexable insert!



Type 01 Ø 12.00 – 17.99 mm
Insert with 1 cutting edge
→ **Discontinued model**

botek[®]